



PAYONG PAGASA

LA NIÑA ADVISORY NO. 14

OVERVIEW

Equatorial sea surface temperatures (SSTs) remain below average across the Pacific Ocean and the tropical Pacific atmospheric condition is consistent with La Niña level. Most of the surveyed climate models suggest La Niña is likely to continue until Jan-Feb-Mar (JFM) 2023 and transition to ENSO-neutral conditions thereafter.

Issued: 07 November 2022



La Niña increases the likelihood of having above normal rainfall conditions across most areas of the country. Adverse impacts such as flooding and landslides are still expected over vulnerable areas and sectors of the country.

Assessment in October 2022

WEATHER SYSTEMS THAT AFFECTED THE COUNTRY



SOUTHWEST MONSOON (HABAGAT)

Warm moist winds from the southwest causing rains over the western portion of the country from May to September



LOW PRESSURE AREA (LPA)

Areas of lowest pressure characterized by cloudiness and rainshowers; areas where a tropical cyclone can form



INTERTROPICAL CONVERGENCE ZONE (ITCZ)

Series of low pressure areas brought about by converging northeast (NE) and southeast (SE) winds that cause thunderstorms and rainshowers



TAIL-END OF FRONTAL SYSTEM (SHEAR LINE)

Zone of converging winds associated with the extension of a frontal system that often brings thunderstorms and rainshowers



EASTERLIES

Warm winds blowing from the east that may bring cloudiness over the eastern part of the country



LOCALIZED THUNDERSTORM

Isolated heavy and dense dark clouds with one or more sudden electric discharges manifested by lightning and thunder often accompanied by showers of rain.



5 TROPICAL CYCLONE

- Tropical Depression (TD) "Maymay" (Oct 11-13);
- Typhoon (TY) "Neneng" (Oct 13-16);
- Tropical Depression (TD) "Obet" (Oct 19-22);
- Severe Tropical Storm (STS) "Paeng" (Oct 26-31);
- Tropical Depression (TD) "Queenie" (Oct.31-Nov.01)

RAINFALL CONDITION



ABOVE NORMAL

120% greater than the normal

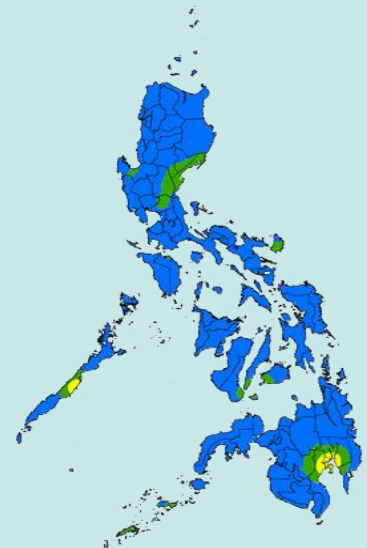
most parts of the country



BELOW NORMAL

20%-60% reduction from the normal

Parts of Davao city, Puerto Princesa City, and Baler, Quezon



TEMPERATURE

Generally, near to slightly warmer than average surface temperatures were felt in most parts of the country except for slightly cooler than average surface temperatures in some areas of MIMAROPA, Ilocos Sur, and Cagayan.



Mountainous Luzon
14.5°C – 25.6°C



Metro Manila
22.0°C – 34.8°C



Mountainous Mindanao
18.0°C – 33.0°C



Lowlands Luzon
19.8°C – 36.8°C



Visayas
22.4°C – 35.9°C



Lowlands Mindanao
20.5°C – 35.8°C

PAYONG PAGASA

LA NIÑA ADVISORY NO. 14

Issued: 07 November 2022

Outlook in November 2022

EXPECTED WEATHER SYSTEMS



NE NORTHEAST MONSOON (AMIHAN)

Cold and drier winds from the northeast bring rains over the eastern side of the country

**Transition to Northeast Monsoon*



E EASTERLIES

Warm winds blowing from the east that may bring cloudiness over the eastern part of the country



INTERTROPICAL CONVERGENCE ZONE (ITCZ)

Series of low pressure areas brought about by converging northeast (NE) and southeast (SE) winds that cause thunderstorms and rainshowers



L LOW PRESSURE AREA (LPA)

Areas of lowest pressure characterized by cloudiness and rainshowers; areas where a tropical cyclone can form



RIDGE OF HIGH PRESSURE AREA (HPA)

An extension of a high pressure area characterized by very light wind and clear skies



LOCALIZED THUNDERSTORM

Isolated heavy and dense dark clouds with one or more sudden electric discharges manifested by lightning and thunder often accompanied by showers of rain.



TAIL-END OF FRONTAL SYSTEM (SHEAR LINE)

Zone of converging winds associated with the extension of a frontal system that often brings thunderstorms and rainshowers



2 or 3 TROPICAL CYCLONES

"Bagyo"; may refer to tropical depression, tropical storm, severe tropical storm, typhoon, or super typhoon.

RAINFALL CONDITION



NEAR NORMAL

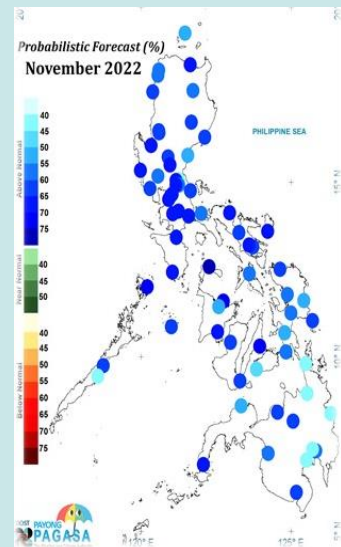
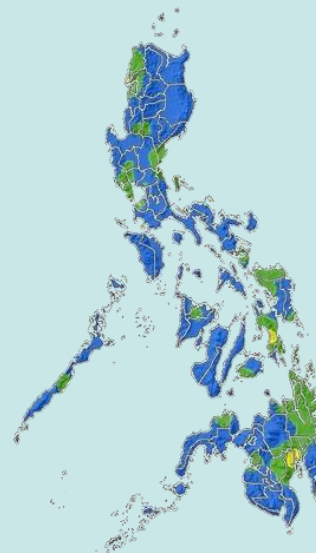
+20% or -20% from the normal



ABOVE NORMAL

120% greater than the normal

Most areas of the country



ABOVE NORMAL

120% greater than the normal

high probability for above-normal rainfall conditions except for below- to near-normal rainfall conditions over Davao and Leyte areas

TEMPERATURE

Generally, forecast air temperatures across the country indicate slightly warmer to warmer than average in most parts of the country except for near to slightly cooler to cooler than average over Mindoro, Romblon, and Leyte provinces.



Mountainous Luzon
12.0°C to 27.0°C



Metro Manila
21.0°C to 35.0°C



Mountainous Mindanao
15.0°C to 33.5°C



Lowlands Luzon
17.5°C to 36.5°C



Visayas
21.0°C to 36.0°C



Lowlands Mindanao
20.5°C to 37.0°C